

Presenting our SAR Inter-Comparison Preprocessing Workflow! Final testing decisions and preparation for data dissemination are complete. All stacks are currently being created and will be released shortly. Look for an exciting opportunity with SEN2-AGRI!

SEN2-AGRI Data Preparation

Our partners at JECAM Belgium are helping us with the preprocessing preparation of the Landsat8 and Sentinel2 optical imagery required by some Partners' classification methods. The SEN2-AGRI system is able to quickly and efficiently pre-process both types of data. Additionally, the system can then use that imagery along with *in situ* data to produce crop type maps. This gives us the opportunity to develop baseline accuracies using optical only data. Partners who have provided *in situ* data since S2 launch dates will be contacted to determine their interest in developing a SEN2-AGRI benchmark! Learn more about SEN2-AGRI at:

<http://www.esa-sen2agri.org/>

EVENTS

Past

January 2018

Launch of 2018 data collection for both Components

February 2018

Emerging Technologies and Methods in Earth Observation for Agricultural Monitoring
Washington, DC
Heather, Laura, and Andrew attended

Upcoming

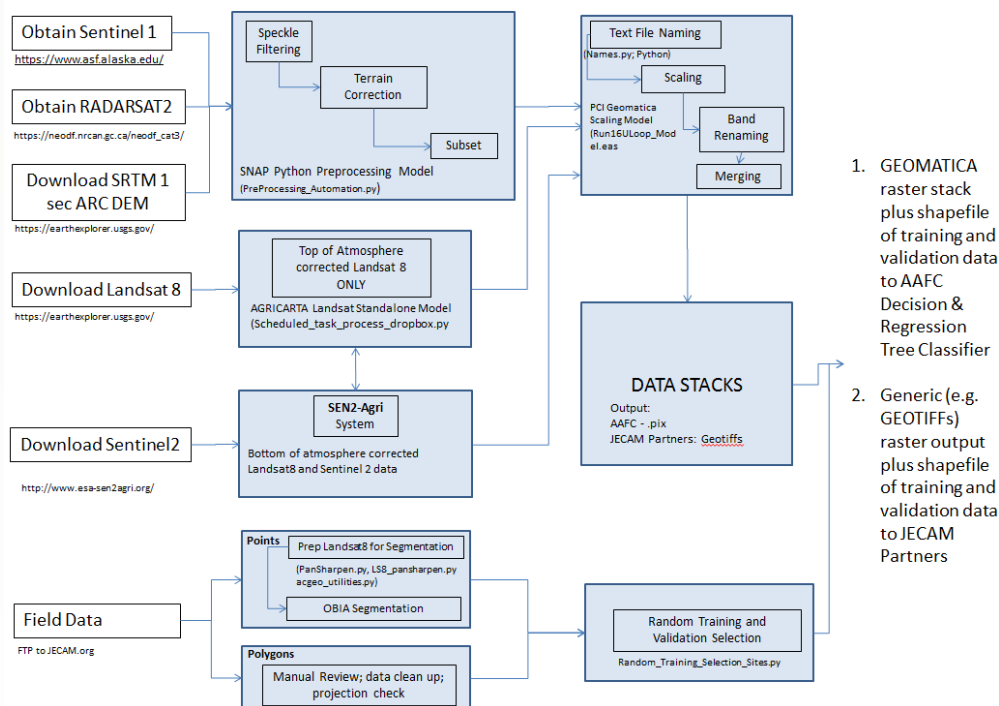
April 2018

Workshop on Data and Systems Requirements for Operational Agricultural Monitoring and Related Community Side Meetings - GEOGLAM
Ispra, Italy
Andrew attending

July 2018

IGARSS 2018
Valencia, Spain
Heather, Mehdi and Laura attending

SAR Inter-Comparison Preprocessing Workflow



Guidelines for 2018 Field Data Collection

Several partners have asked for our field protocol for collecting *in situ* data for LAI and Biomass for the 2018 field season. The documents are available at:

<http://www.jecam.org/?/jecam-blog/sar-inter-comparison-experiment>

The guideline document is a reflection of our “best practices” that we have developed over several field seasons.

We welcome suggestions and input into these documents and field methods.